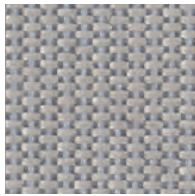
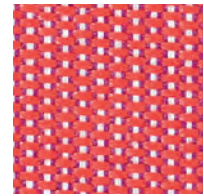


Patio

kvadrat



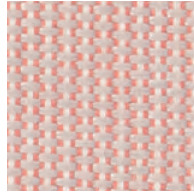
150



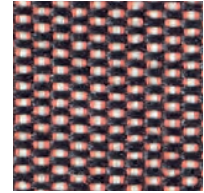
550



210



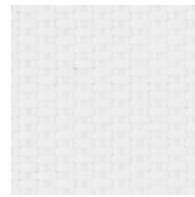
340



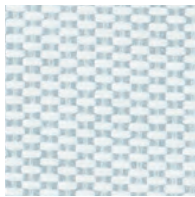
370



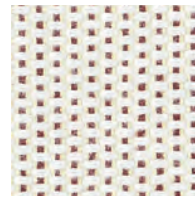
230



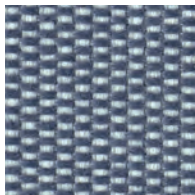
100



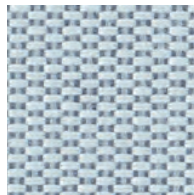
110



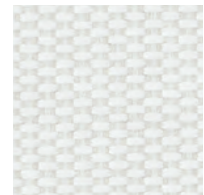
430



170

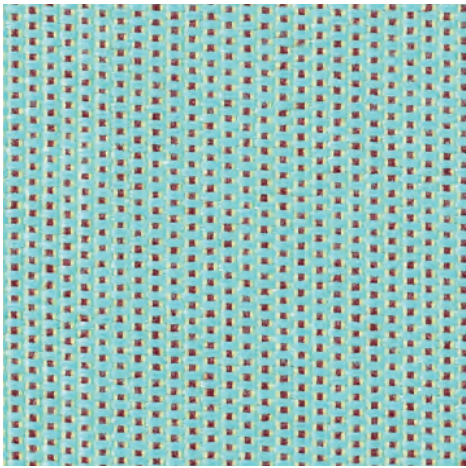


140

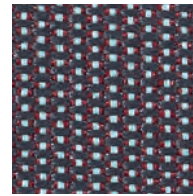


200

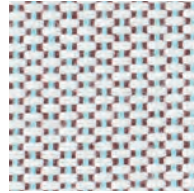
Patio



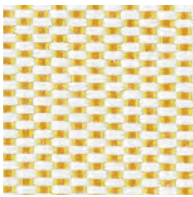
840



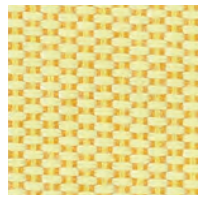
970



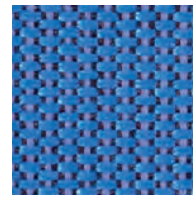
220



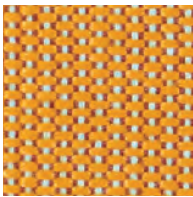
410



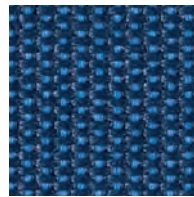
440



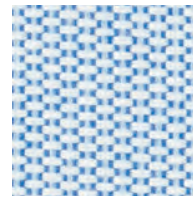
750



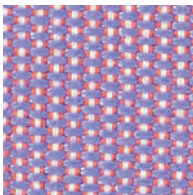
450



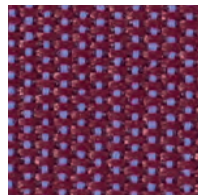
780



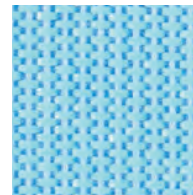
730



650



570



740

Patio

Designed by Karina Nielsen Rios

DK

Anvendelse Uden- og indendørs møbelstof til såvel privat og offentlig indretning. Resistens overfor skimmel, klor-, havvand og UV.

Beskrivelse 100% Trevira CS. Fluorcarbon-fri vandafvisende finish. Bredde ca. 140 cm. Vægt ca. 560 g/lbm. Garnfarvet. Nuanceforskkel kan forekomme.

Ægkant ↔

Slidstyrke: Ca. 50.000 slidbevægelser efter Martindale metoden EN ISO 12947. **Lysægthed** (ISO) 7. **Vejrægthed** (ISO) 6-7. **Pilling** (EN ISO) 3-4. **Gnidægthed** (ISO) tør 4-5, våd 4-5. **Spray test** (EN) 3. **Resistens overfor tilsudsning** min. 4 (BS). **Flammesikring:** BS 5852 ignition source 3. BS 5852 part 1 ignition source 0. DIN 4102 B1. EN 1021-1/2. IMO FTP Code 2010:Part 8. NF D 60 013. SN 198 898 5.2. UNI 9175 11M. US Cal. Bull. 117-2013. ÖNORM B1 / Q1. (Kopi af testrapport kan rekvireres).

Vedligeholdelse Se ISO symboler. Krypning ca. 1% ved vask 30°C.

UK

Application Out- and indoor upholstery for both domestic and public decoration. Mildew, chlorine, seawater and UV resistant.

Description 100% Trevira CS.

Fluorocarbon-free water repellent finish. Width app. 55 inches (140 cm). Weight app. 560 g/lin.m. Yarn dyed. Colour differences may occur.

Selvedge ↔

Abrasion: App. 50,000 rubs acc. to the Martindale method EN ISO 12947.

Lightfastness (ISO) 7. **Fastness to weathering** (ISO) 6-7. **Pilling** (EN ISO) 3-4. **Fastness to rubbing** (ISO) dry 4-5, wet 4-5. **Spray test** (EN) 3. **Resistant to visible soiling** (BS) min. 4. **Flame resistance:** BS 5852 ignition source 3. BS 5852 part 1 ignition source 0. DIN 4102 B1. EN 1021-1/2. IMO FTP Code 2010:Part 8. NF D 60 013. SN 198 898 5.2. UNI 9175 11M. US Cal. Bull. 117-2013. ÖNORM B1 / Q1. (Copy of test report available).

Care Please see the ISO symbols. Shrinkage app. 1% when washed at 30°C.

DE

Anwendungsbereich Möbelstoff wohlgeeignet im sowohl privaten als öffentlichen Wohnbereich. Resistent gegenüber Schimmel, Chlor-, Meerwasser und UV.

Beschreibung 100% Trevira CS. Fluorcarbon-frei wasserabweisend Ausrüstung. Breite ca. 140 cm. Gewicht ca. 560 g/lfd.m. Garngefärbt. Farbunterschiede können vorkommen.

Webkant ↔

Scheuerfestigkeit: Ca. 50.000 Scheuerhübe gemäss der Martindale Methode EN ISO 12947. **Lichtechtheit** (ISO) 7. **Wetterechtheit** (ISO) 6-7. **Pilling** (EN ISO) 3-4. **Reibechtheit** (ISO) trocken 4-5, nass 4-5. **Spraytest** (EN) 3. **Resistent gegenüber Verschmutzung** (BS) min. 4. **Flammschutz:** BS 5852 ignition source 3. BS 5852 part 1 ignition source 0. DIN 4102 B1. EN 1021-1/2. IMO FTP Code 2010:Part 8. NF D 60 013. SN 198 898 5.2. UNI 9175 11M. US Cal. Bull. 117-2013. ÖNORM B1 / Q1. (Kopie von Prüfungsbericht verfügbar).

Pflege Sehen Sie bitte die ISO Pflegesymbole. Wascheinlauf ca. 1% bei 30°C.

NL

Toepassing Uitstekend toepasbaar zowel in particuliere woningen als voor projecten. Schimmel, chloor-, zeewater en UV resistent. **Omschrijving** 100% Trevira CS.

Fluorcarbon-vrije water afstotende behandeling. Breedte ca. 140 cm. Gewicht ca. 560 gr/str. m. Garengerfvd. Kleurverschillen kunnen optreden.

Zelfkant ↔

Slijtvastheid: Ca. 50.000 toeren Martindale EN ISO 12947. **Lichtechtheid** (ISO) 7. **Kleurechtheid bij weersomstandigheden** (ISO) 6-7. **Pilling** (EN ISO) 3-4. **Wrijftechtheid** (ISO) droge 4-5, natte 4-5. **Spray test** (EN) 3. **Weerstand tegen vervuiling** (BS) min. 4. **Brandvrijheid:** BS 5852 ignition source 3. BS 5852 part 1 ignition source 0. DIN 4102 B1. EN 1021-1/2. IMO FTP Code 2010:Part 8. NF D 60 013. SN 198 898 5.2. UNI 9175 11M. US Cal. Bull. 117-2013. ÖNORM B1 / Q1. (Op aanvraag sturen wij U graag een kopie van het testrapport toe).

Onderhoud Zie de ISO symbolen. Krimp ca. 1% bij 0°C.

FR

Domaine d'utilisation Tissu d'ameublement pour aménagement privé et public. Résistant aux moisissures, au chlore, à l'eau de mer et UV.

Description 100% Trevira CS. Fini hydrofuge sans fluorocarbone. Largeur env. 140 cm. Poids env. 560 g/m lg. Teinture sur fil. Ecart des coloris possibles.

Lisière ↔

Résistance à l'abrasion: Env. 50.000 révolutions selon le procédé Martindale EN ISO 12947. **Résistance à la lumière** (ISO) 7. **Résistance aux intempéries** (ISO) 6-7. **Boulochage** (EN ISO) 3-4. **Résistance au frottement** (ISO) sec 4-5, mouillé 4-5. **Test de pulvérisation** (EN) 3. **Résistance à la salissure visible** (BS) min. 4. **Normes au feu:** BS 5852 ignition source 3. BS 5852 part 1 ignition source 0. DIN 4102 B1. EN 1021-1/2. IMO FTP Code 2010:Part 8. NF D 60 013. SN 198 898 5.2. UNI 9175 11M. US Cal. Bull. 117-2013. ÖNORM B1 / Q1. (La copie du compte rendu des tests est disponible sur demande).

Entretien Voir les symboles ISO.

Rétrécissement: Env. 1% pour lavage à 30°C.

IT

Destinazione d'uso Rivestimenti per imbottiti, casa e contract. Resistente alla muffa, al cloro, all'acqua de mare e UV.

Caratteristiche 100% Trevira CS. Finitura idrorepellente senza fluorocarbon. Altezza circa 140 cm. Peso circa 560 gr/mtl. Tinto in filo. Possibili differenze per colore.

Cimosa ↔

Resistenza all'abrasione: circa 50.000 cicli/metodo Martindale EN ISO 12947. **Resistenza alla luce** (ISO) 7. **Resistenza alle intemperie** (ISO) 6-7. **Pilling** (EN ISO) 3-4. **Resistenza allo sfregamento** (ISO) condizione a secco 4-5, condizione umido 4-5. **Prova dello spruzzo** (EN) 3. **Resistenza della sporczia visibile** (BS) min. 4. **Ignifugazione:** BS 5852 ignition source 3. BS 5852 part 1 ignition source 0. DIN 4102 B1. EN 1021-1/2. IMO FTP Code 2010:Part 8. NF D 60 013. SN 198 898 5.2. UNI 9175 11M. US Cal. Bull. 117-2013. ÖNORM B1 / Q1. (Disponibile copia del test).

Manutenzione Per favore seguire simboli ISO. Restrigimento 1% quando lavata 30°C.

ES

Aplicación Tapicería para decoración de uso doméstico y público. Resistente al moho, al cloro, al agua salina y UV.

Descripción 100% Trevira CS. Repelente al agua libre de fluorocarbonos. Anchura aprox. 140 cm. Peso aprox. 560 gr/ml. Teñido en hilado. Posibles variaciones de tintadas.

Filo ↔

Resistencia al desgaste: Aprox. 50.000 ciclos según el método Martindale EN ISO 12947. **Estabilidad del color a la luz** (ISO) 7. **Resistencia a la intemperie** (ISO) 6-7. **Relleno** (EN ISO) 3-4. **Solidez al frotamiento** (ISO) seco 4-5, mojado 4-5. **Spray test** (EN) 3. **Resistencia a la suciedad visible** (BS) min. 4. **Resistencia al fuego:** BS 5852 fuente de ignición 3. BS 5852 part 1 fuente de ignición 0. DIN 4102 B1. EN 1021-1/2. IMO FTP Code 2010:Part 8. NF D 60 013. SN 198 898 5.2. UNI 9175 11M. US Cal. Bull. 117-2013. ÖNORM B1 / Q1. (Copia del informe de ensayos disponible).

Mantenimiento Consulte los símbolos ISO. Encogimiento aprox. un 1% en lavado a 30°C.

JP

用途 住宅及び公共施設向けの室内/室外用テキスタイル耐久性: カビ/塩素/海水/UV。

詳細 100% トレヴィーラ CS。無機性撥水加工済み。幅: 140 cm。重量: 1mあたり約 560 g。糸染め。色彩ニュアンスに多少の違いが生じる可能性あり。

耳、ふち、↔

テスト:

磨耗: マーチンデル法により摩擦運動約 50,000 回。EN ISO 12947. **色褪せ保証:** (ISO) 7. **耐候性** (ISO) 6-7. **ピリング** (EN ISO) 3-4. **摩擦保証:** (ISO) 乾燥状態 4-5、濡れた状態 4-5. **スプレーテスト済み** (EN) 3. **防汚性** (BS) min. 4. **耐炎性:** BS 5852 ignition source 3. BS 5852 part 1 ignition source 0. DIN 4102 B1. EN 1021-1/2. IMO FTP Code 2010:Part 8. NF D 60 013. SN 198 898 5.2. UNI 9175 11M. US Cal. Bull. 117-2013. ÖNORM B1 / Q1. (テストレポートのコピー入手可能。)

手入れ

ISOシンボル参照。30°C で洗浄した際の縮み約 1%。

CN

适用范围 适用于住宅和公共空间的室内兼室外软装装饰材料具有防发霉、耐氯、耐海水、抗紫外线特性。

成分 100% Trevira CS。不含碳氟化合物的防泼水涂层。幅宽约 55 英寸 (140 cm)。重量约 560 克/延米。纱染色面料。颜色可能稍有色差。

图纹方向 ↔

马丁代尔法 约 50,000 转。EN ISO 12947. **光照色牢度** (ISO) 7. **耐气候色牢度** (ISO) 6-7. **起毛起球** (EN ISO) 3-4. **摩擦色牢度** (ISO) 干燥 4-5、湿 4-5. **喷雾测试** (EN) 3. **抗可见污损** (BS) min. 4. **阻燃性:** BS 5852 ignition source 3. BS 5852 part 1 ignition source 0. DIN 4102 B1. EN 1021-1/2. IMO FTP Code 2010:Part 8. NF D 60 013. SN 198 898 5.2. UNI 9175 11M. US Cal. Bull. 117-2013. ONORM B1 / Q1. (可提供测试报告副本)。

维护 请参照 ISO 标志。于温度 30°C 清洗时，面料缩水率约 1%。



10 year warranty